

ADDRESS

Premises No 43 Vinoba Bhave Road, James
Long Sarani, New Alipore Kolkata- 700038

☎ 73531 64111



Registered Office:

EMAMI REALTY LIMITED

Acropolis, 13th Floor, 1858/1 Rajdanga
Main Road,

Kasba, Kolkata - 700107, West Bengal.

Ph: 033 6625 1200

www.emamirealty.com

Disclaimer: This document is merely conceptual in nature and is to be used for general information purposes only. All Information mentioned in this document is for representative purpose only. Any interested party should verify all the information mentioned in this document independently with the Developer prior to making any decision for buying any property in the housing project. The user of this document shall be deemed to have confirmed that he/she has not relied on any information contained herein while making any booking/ purchase in this Project of the Developer.

Rera No: WBRERA/P/KOL/2024/002136



ULTRA LUXE BESPOKE RESIDENCES
BY THE WATERFRONT



UNPARALLELED ELEGANCE,
LIMITLESS SPACE.



YOUR GATEWAY TO A TRULY
LUXE LIVING EXPERIENCE





Emami Aamod epitomizes the pinnacle of luxury living, situated in the prestigious locale of James Long Sarani, New Alipore. Translating to "joy and happiness," this project offers an exquisite collection of 3BHK and 4 BHK residential apartments with servant rooms spread across four magnificent towers, all set within the expansive embrace of a lush 4-acre land.

At the heart of Emami Aamod lies a picturesque 1 acre lake approx. adorned with a captivating musical fountain, creating a serene backdrop that soothes the soul. The project's allure extends to its opulent amenities, including a state-of-the-art clubhouse replete with modern facilities that cater to every aspect of refined living.

One of the defining features of Emami Aamod is its architectural grandeur, characterized by multi-storied elegance that commands attention. The infinity swimming pool, delicately cantilevered on the lake, offers an unparalleled experience with a panoramic 180-degree view, creating an illusion of merging with the horizon.

For moments of relaxation and indulgence, residents can unwind at the chic chill-out bar lounge strategically positioned to overlook the tranquil lake. The beach-type seating and meticulously landscaped surroundings further enhance the ambience, transforming everyday moments into extraordinary experiences. Emami Aamod is not just a residential address; it's a statement of luxurious living, where every detail is meticulously crafted to elevate your lifestyle to new heights of sophistication and serenity.

**OTHERS CALL IT OPULENCE
YOU WILL CALL IT HOME**



CAUSING A RIPPLE,
BY THOSE WHO UNDERSTAND
LUXURY THE BEST.



**TWO VISIONARIES SHRI RADHE SHYAM AGARWALJI & SHRI RADHE SHYAM GOENKAJI
STARTED A MODEST BUSINESS VENTURE WHICH GREW TO BECOME THE CORPORATE GIANT IT IS TODAY.**

FOUNDER'S MESSAGE

As the founders of Emami, we made a commitment to ourselves that the organization will exhibit values that are most important to our customers. Every interaction will be based on quality, transparency, customer-focus and a commitment to delivery. Over the years, this is what has helped us cultivate a mutually beneficial relationship for everyone associated with us. It is with this commitment that we bring to you the promise of a better future through Emami Realty. We assure you that the same principles of quality and customer service that have made our other business achieve a positive local and global presence, will apply to Emami Realty. Our mission is to deliver residential and commercial projects that are contemporary, global and well appreciated by the end user.

The latest offering comes to you in the form of Emami Aamod, a luxurious 3 BHK and 4 BHK apartment located at James Long Sarani, New Alipore. This township will be one of the most aspirational and landmark properties of New Alipore. As the founders of the Group, we extend the Emami promise to you and at the same time, look forward to warmly welcoming you to be a part of Emami Aamod, New Alipore.

Best Regards,
Yours sincerely,
R. S. Agarwal & R. S. Goenka
Founders– Emami Group

STRONG FOUNDATION. BUILT TO LAST.

Founded in 1974 by Mr. R. S. Agarwal & Mr. R. S. Goenka, Emami Group is a diversified business conglomerate generating employment for over 25,000 employees. Much respected for its products and services, this group stands synonymous with quality and trust.

EMAMI GROUP – COMPANIES

- **Emami Limited** – The Group's Flagship Company is one of India's leading FMCG Companies engaged in manufacturing & marketing of personal care & healthcare products with a presence in over 4.9 million retail outlets across India and its global footprint in over 70 countries.
- **Emami Agrotech Ltd** – 2nd largest edible oil refinery in India and the largest bio-diesel producer in the country
- **Emami Paper Mills** – India's largest newsprint manufacturer and one of the leading producer of paper and high-end packaging board
- **CRI Tips** – 2nd largest ball point tips manufacturer globally
- **Frank Ross** – Largest pharmacy retail chain in Eastern India
- **Starmark** – One of the largest leisure-cum-book store chains in India
- **Emami Art & Kolkata Centre for Creativity** – one of India's largest contemporary art galleries and inter-disciplinary creative centers for performing arts
- **Emami Realty** – A Leading player in the real estate sector, with landmark development in India & abroad covering almost 3.7 crore sq ft.



EVERY SECOND, AROUND 140+ EMAMI PRODUCTS ARE SOLD – SOMEWHERE IN THE WORLD

Leading Emami Power Brands**

- **BoroPlus** – Largest selling antiseptic cream in India
- **Fair and Handsome** – Category creator and market leader
- **Navratna Oil** – India’s largest selling cool oil brand with market leadership.
- **Zandu and Mentho Plus Balm** – India’s leading pain management balms with market leadership.
- **Kesh King** – India’s no.1 Hairfall expert

CREATING LANDMARKS ACROSS CITIES AND COUNTRIES



Emami City, Kolkata

North Kolkata’s Largest Residential Complex of 25 lakh sq. ft.



Emami Aerocity, Coimbatore

Largest, Planned, Residential Township. Plotted development of 62 acre



South City, Kolkata

A condominium of 45 lakh sq. ft.



Montana, Mumbai

Over 17 lakh sq. ft. of premium quality apartments



Urbana, Kolkata

70 lakh sq ft of uber-urban construction set amid 66 acre of prime land



Swanvilla, Hyderabad

Spread across 10 acre, it is one of the most popular residential developments in Tellapur



Emami Nature, Jhansi

The biggest township of Jhansi, spread across 100 acre, a little away from the hustle-bustle of Jhansi, along with river Ghurai.



Swanlake, Hyderabad

Spread across 11 lakh sq ft, with 80% open space set amid a serene lake.



Emami Tejomaya, Chennai

Perfect combination of global expertise and Indian sensibilities, a project of cover 8.35 acre



Altair, Colombo

An iconic landmark of 13 lakh sq ft, designed by internationally celebrated architect Moshe Safadie.



Emami Aastha

A premium bungalow township, spread across 40 acres is situated at Joka. Experience urban forest with innumerable amenities which blends modern living with nature’s embrace



Emami Business Bay

Emami Business Bay, situated at Sec V, Saltlake, Kolkata that provides the best of architecture, efficient workspaces, and amenities that catapult the success of business.

LOCATION ADVANTAGE



A BEAUTIFUL DESTINATION AWAITS YOU



TRANSPORTATION:

- MAJERHAT METRO STATION- 1.9 KM
- HOWRAHSTATION- 10.3KM
- SEALDAH STATION- 10.3KM
- AIRPORT- 29.5KM



HOSPITALS:

- BPPODDAR HOSPITAL & MEDICAL RESEARCH- 1.6
- NARAYAN MEMORIAL HOSPITAL-1.9 KM
- CMRIHOSPITAL: 2.6 KM
- RSVHOSPITAL: 2.8KM
- WOODLAND HOSPITAL: 4.1KM
- BELLE VUE CLINIC- 7 KM
- URBANHEALTHCARE-10.4



EDUCATION:

- DAV PUBLIC SCHOOL- 150 M
- NARAYANA SCHOOL-500M
- RP GOENKA SCHOOL- 1.6 KM
- SRI SRI ACADEMY, KOLKATA- 2.4 KM
- JADAVPUR UNIVERSITY- 5.8KM
- GD BIRLA SCHOOL- 5.9 KM
- SOUTH POINT SCHOOL- 6.9 KM
- LA MARTINIERE FOR BOYS- 6.9 KM
- ST. XAVIER'S COLLEGE- 7.1 KM
- LA MARTINIERE FOR GIRLS-7.2 KM
- SAINI INTERNATIONAL SCHOOL- 8.1 KM
- CALCUTTA UNIVERSITY- 9.9KM
- PRESIDENCY COLLEGE- 9.9KM



TOP ATTRACTIONS:

- UPCOMING PHOENIX MALL- 2.2 KM
- TOLLYGUNJ GOLF CLUB- 4 KM
- LAKEMALL- 4.2 KM
- SOUTH CITY MALL-5.5 KM
- QUESTMALL-8.2KM





WHERE THE WATERFRONT IS
THE HOMEFRONT



L I V E L I F E

E X T R A O R D I N A I R E

Basketball Court | PickelBall Court





RECREATIONAL SPACES
AS DIVERSE
AS YOUR MOOD

Cricket Net | Kids Play Area | Yoga deck | Walk Way





C U R A T E D
E X P E R I E N C E S F O R
A N E L E V A T E D
L I V I N G

Entrance Water Feature Wall | Palm Court | Reflexology | Sit Out Plaza



DISCOVER THE MAGIC OF
NATURE'S MOST BEAUTIFUL BLOOMS.



A FLORAL PARADISE, PERFECTLY CULTIVATED.



Sculpture Garden | Sunken Sit Out | Sr Citizen Park | Deck with Tensile Canopy
Topiary Garden | Event Garden | Lawn | Parterre Garden | Amphitheatre
Fragrance Garden | Deck with Trellis | Sitting Area | Wooden Deck | Pet Relief Area



SPACES SO LARGE
IT GIVES YOUR CHILDREN
MORE MEMORIES





FOR THE
CONNOISSEURS OF
FINE LIVING
A NEW CHAPTER
UNFOLDS



CLUB LOBBY



BANQUET HALL



POOL FACING BAR LOUNGE



SUNKISSED RELAXATION,
SIGNATURE STYLE.
THE ULTIMATE POOLSIDE
RETREAT AWAITS.





FLOAT IN LUXURY
RELAX IN INFINITY





RISE. SWEAT.
LIVE LIKE A LEGEND.



BE
STRONGER
THAN
YOUR
EXCUSES

HARD
WORK
PAYS
OFF

fitness

TECHNO - MODERN GYM



PILATES ZONE



UNPARALLELED LUXURY,
AN ULTIMATE RELAXATION EXPERIENCE





FIND A GENTLE
PAUSE FROM
A DEMANDING LIFE



REACH NEW HEIGHTS,
WHO SAYS IT'S LONELY ON TOP.





R O O F T O P B L I S S :
V I E W S , V I B E S ,
A N D U N F O R G E T T A B L E
M O M E N T S .

Skating Rink at Terrace | Stargazing Deck | Barbeque with Wooden Deck | Sitting Area



OPEN GARDEN WITH SPRAWLING LAKE



**10 Tier Security | All vastu compliant apartments | Energy efficient designs and system
Cross ventilation for airy spaces | Environmental friendly construction materials
Ample parking at podium and basement levels | EV charging points in parking
Deck Seating View | Wastewater management**



All vastu compliant apartments



10 Tier Security



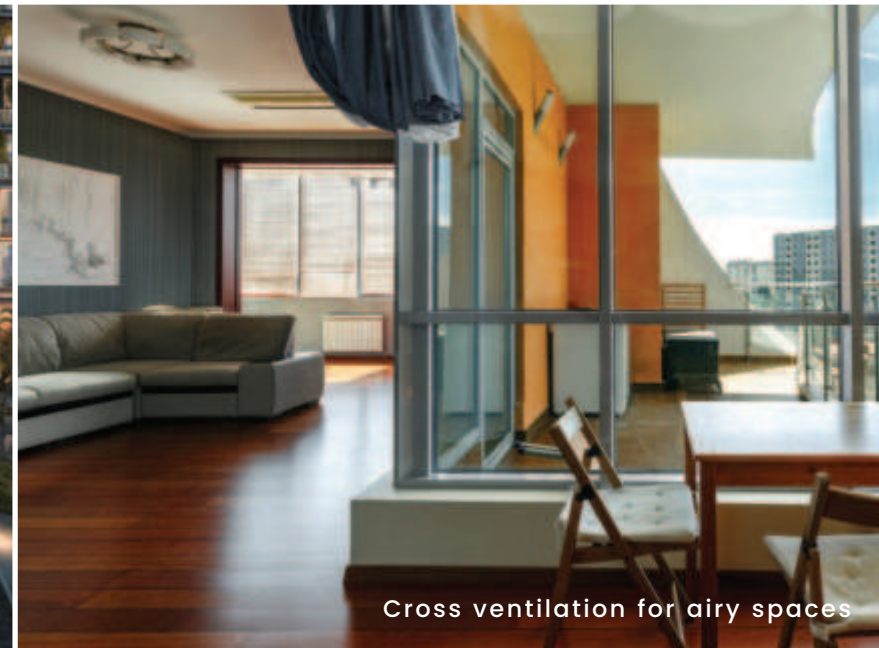
**Ample parking at podium
and basement levels**



EV charging points in parking



Deck Seating View



Cross ventilation for airy spaces



A 180-DEGREE PANORAMIC
WINDOW TO THE WORLD

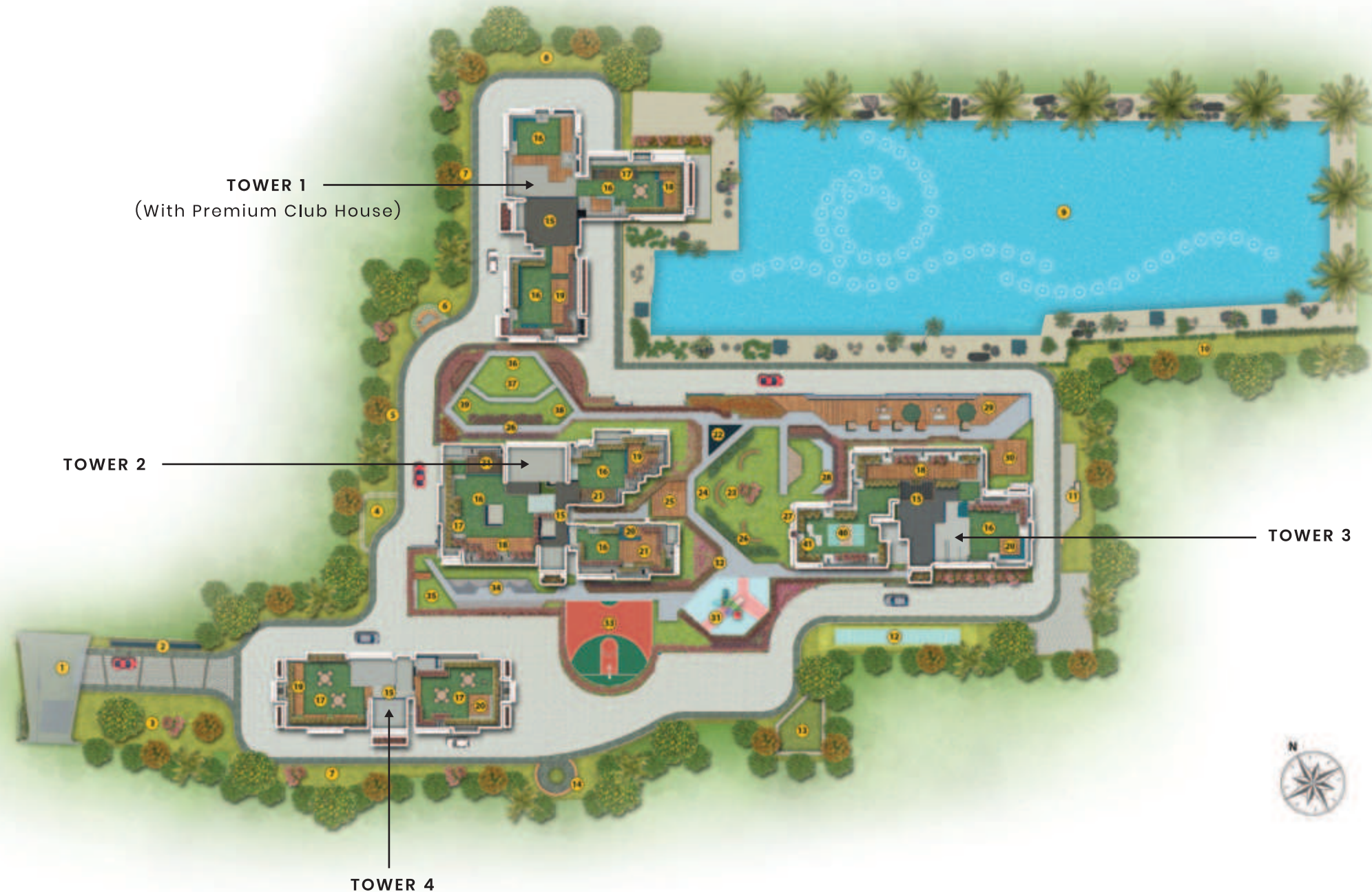


ROOMS BIGGER THAN
YOU DREAMT THEM TO BE

M A S T E R L A Y O U T

Total Land Area
4 Acres

- 1 ENTRY GATE
- 2 WATER CURTAIN WALL
- 3 TOPIARY GARDEN
- 4 LAWN
- 5 PALM COURT
- 6 WATER FOUNTAIN
- 7 SCULPTURE GARDEN
- 8 FEATURE WALL
- 9 MUSICAL WATER FOUNTAIN
- 10 PET RELIEF AREA
- 11 SIT-OUT PLAZA
- 12 CRICKET NET
- 13 SUNKEN SIT-OUT
- 14 SR. CITIZEN GARDEN
- 15 ENTRANCE PLAZA
- 16 ARTIFICIAL TURF
- 17 SIT-OUT AREA
- 18 STAR GAZING DECK
- 19 VIEW DECK
- 20 BARBEQUE AREA
- 21 DECK SEATING
- 22 WATER FOUNTAIN
- 23 LAWN WITH SIT-OUT
- 24 FRAGRANCE GARDEN
- 25 WOODEN DECK



- 26 PARTERRE GARDEN
- 27 SCREEN FOR OCCASION
- 28 AMPHITHEATRE
- 29 LAKE FACING DECK WITH SEATING
- 30 PARTY DECK AREA
- 31 KID'S PLAY AREA
- 32 AROMA GARDEN
- 33 BASKETBALL COURT
- 34 REFLEXOLOGY
- 35 DECK WITH TRELIS
- 36 LILLY POND
- 37 EVENT GARDEN
- 38 OPEN GYM
- 39 YOGA LAWN
- 40 PICKLEBALL COURT
- 41 SKATING RINK

CLUB HOUSE

- 1 BANQUET HALL
- 2 INFINITY EDGE POOL
- 3 BAR LOUNGE FACING LAKE
- 4 GYMNASIUM
- 5 LAVISH CLUB LOBBY SIT OUTS
- 6 SPA/STEAM
- 7 PILATES ZONE
- 8 SQUASH COURT
- 9 YOGA/AEROBICS
- 10 MULTIPURPOSE SPORTS (CHESS/CARROM)



B E A U T I F U L H O M E S
N O W B E S P O K E T O O



LOBBY LOUNGE



LIFT LOBBY



LUXURY RESIDENCES
THAT PROUDLY RISE
ABOVE EXPECTATIONS



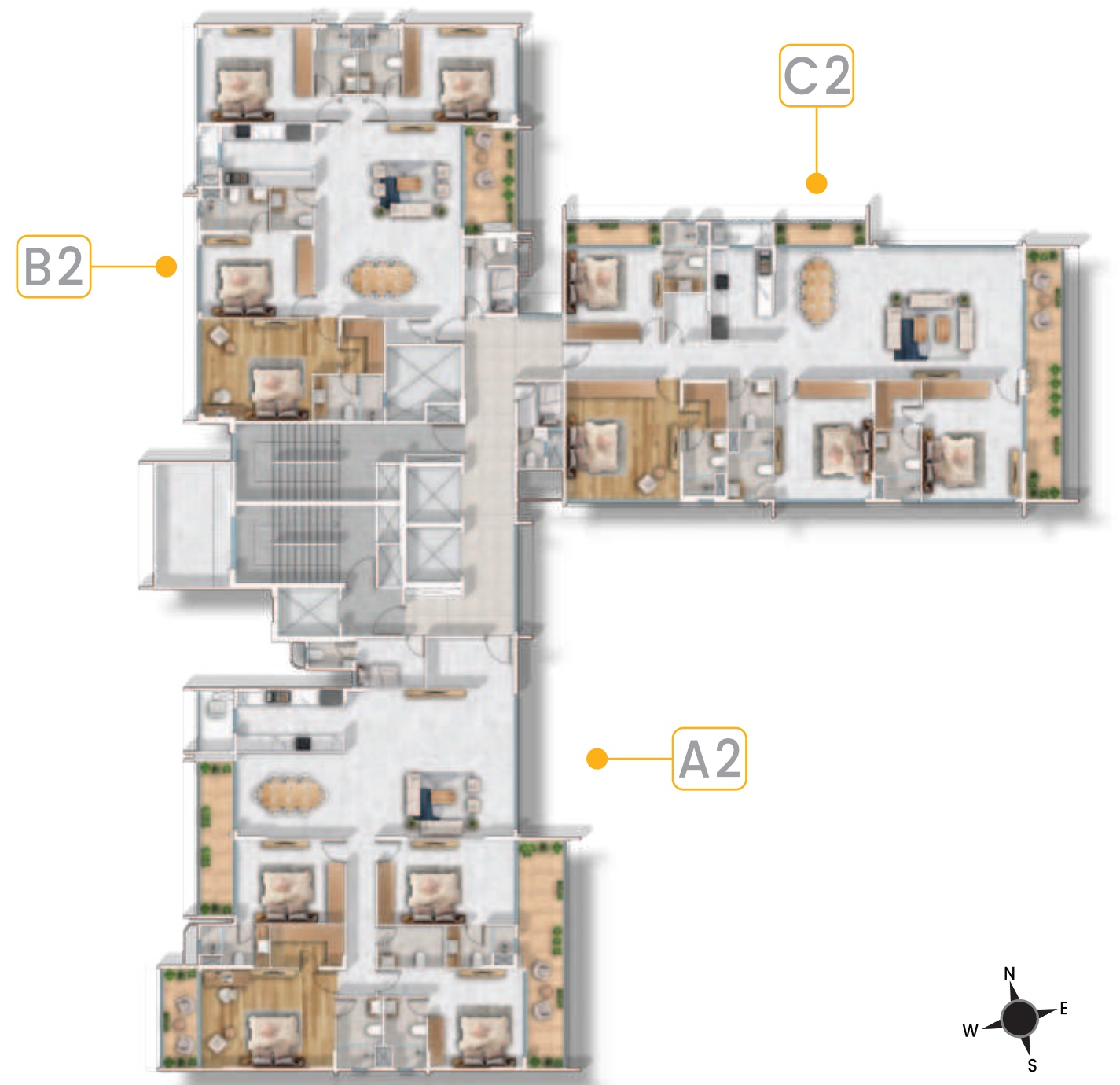
AN ARCHITECTURAL LANDMARK,
CRAFTED FOR THE FUTURE.
BOLD. REFINED. TIMELESS.





1

TOWER 1 - ODD FLOORS 3RD, 5TH, 7TH, 9TH, 11TH, 13TH, 15TH, 17TH, 19TH, 21ST FLOOR



TOWER 1 - EVEN FLOORS 4TH, 6TH, 8TH, 10TH, 12TH, 14TH, 16TH, 18TH, 20TH, 22ND FLOOR



Tower 1 (Odd)
Unit A1 | 4BHK+SERV

UNIT A1
ODD FLOORS - 3RD, 5TH, 7TH, 9TH, 11TH, 13TH, 15TH,
17TH, 19TH, 21ST

CARPET AREA - 2092 sq. ft.

BUILT-UP AREA
WITH BALCONY - 2654 sq. ft.

SALEABLE AREA - 3127 sq. ft.

No.	Space Type	Dimensions (Ft.Inch)	Area (Sq. Ft.)
1	MASTER BEDROOM	17' 9" X 13' 0"	339.87
2	DRESSER	9' 9" X 5' 6"	
3	TOILET	6' 0" X 9' 3"	
4	BEDROOM 2	12' 9" X 13' 0" 6' 9" X 3' 6"	240.25
5	TOILET 2	5' 6" X 9' 3"	
6	BEDROOM 3	18' 3" X 11' 3"	254.81
7	TOILET 3	9' 0" X 5' 6"	
8	BEDROOM 4	14' 3" X 11' 0"	206.25
9	TOILET 4	9' 0" X 5' 6"	
10	DINNING	14' 6" X 11' 3"	730.37
11	LIVING	22' 6" X 19' 9"	
12	PUJA ROOM	11' 6" X 6' 6"	
13	COMMON TOILET	8' 9" X 5' 6"	
14	KITCHEN	14' 0" X 8' 3"	151.5
15	DRY YARD	4' 6" X 8' 0"	
16	SERVANT ROOM	9' 3" X 6' 6"	79.62
17	SERVANT TOILET	6' 0" X 3' 3"	
18	PASSAGE	4' 0" X 17' 8"	70.67

Note: The plans shown are only indicative and subject to variations and modifications by the developer and for technical reasons without any notice



Tower 1 (Even)
Unit A2 | 4BHK+SERV

UNIT A2
EVEN FLOORS - 4TH, 6TH, 8TH, 10TH, 12TH, 14TH, 16TH,
18TH, 20TH, 22ND

CARPET AREA - 2092 sq. ft.

BUILT-UP AREA
WITH BALCONY - 2697 sq. ft.

SALEABLE AREA - 3170 sq. ft.

No.	Space Type	Dimensions (Ft.Inch)	Area (Sq. Ft.)
1	MASTER BEDROOM	17' 9" X 13' 0"	339.87
2	DRESSER	9' 9" X 5' 6"	
3	TOILET	6' 0" X 9' 3"	
4	BEDROOM 2	12' 9" X 13' 0" 6' 9" X 3' 6"	240.25
5	TOILET 2	5' 6" X 9' 3"	
6	BEDROOM 3	18' 3" X 11' 3"	254.81
7	TOILET 3	9' 0" X 5' 6"	
8	BEDROOM 4	14' 3" X 11' 0"	206.25
9	TOILET 4	9' 0" X 5' 6"	
10	DINNING	14' 6" X 11' 3"	730.37
11	LIVING	22' 6" X 19' 9"	
12	PUJA ROOM	11' 6" X 6' 6"	
13	COMMON TOILET	8' 9" X 5' 6"	
14	KITCHEN	14' 0" X 8' 3"	151.5
15	DRY YARD	4' 6" X 8' 0"	
16	SERVANT ROOM	9' 3" X 6' 6"	79.62
17	SERVANT TOILET	6' 0" X 3' 3"	
18	PASSAGE	4' 0" X 17' 8"	70.67

Note: The plans shown are only indicative and subject to variations and modifications by the developer and for technical reasons without any notice



Tower 1 (Odd & Even)
Unit B1 & B2 | 4BHK+SERV

UNIT B1 & B2
FLOORS - 3RD TO 22ND

CARPET AREA - 1816 sq. ft.

BUILT-UP AREA
WITH BALCONY - 2121 sq. ft.

SALEABLE AREA - 2532 sq. ft.

No.	Space Type	Dimensions (Ft.Inch)	Area (Sq. Ft.)
1	MASTER BEDROOM	14' 9" X 13' 6" 3' 6" X 7' 3"	321.69
2	DRESSER	5' 9" X 7' 3"	
3	TOILET	9' 3" X 6' 0"	
4	BEDROOM 2	15' 0" X 11' 3"	218.25
5	TOILET 2	9' 0" X 5' 6"	
6	BEDROOM 3	14' 9" X 12' 9"	238.37
7	TOILET 3	5' 9" X 8' 9"	
8	BEDROOM 4	14' 6" X 12' 9"	235.19
9	TOILET 4	5' 9" X 8' 9"	
10	DINNING & LIVING	19' 3" X 25' 9"	541.69
11	COMMON TOILET	5' 6" X 5' 6"	
12	STORE	5' 3" X 3' 0"	
13	KITCHEN	12' 3" X 8' 3"	131.68
14	DRY YARD	12' 3" X 2' 6"	
15	SERVANT ROOM	6' 6" X 6' 0"	61.67
16	SERVANT TOILET	6' 6" X 3' 6"	

Note: The plans shown are only indicative and subject to variations and modifications by the developer and for technical reasons without any notice



Tower 1 (Odd)
Unit C1 | 4BHK+SERV

UNIT C1
ODD FLOORS - 3RD, 5TH, 7TH, 9TH, 11TH, 13TH, 15TH,
17TH, 19TH, 21ST

CARPET AREA - 2070 sq. ft.

BUILT-UP AREA
WITH BALCONY - 2585 sq. ft.

SALEABLE AREA - 3053 sq. ft.

No.	Space Type	Dimensions (Ft.Inch)	Area (Sq. Ft.)
1	MASTER BEDROOM	15' 0" X 15' 9"	321.75
2	DRESSER	6' 0" X 5' 9"	
3	TOILET	6' 0" X 8' 6"	
4	BEDROOM 2	13' 3" X 15' 9"	301.69
5	DRESSER 2	6' 0" X 6' 6"	
6	TOILET 2	6' 0" X 9' 0"	
7	BEDROOM 3	13' 0" X 15' 9"	258.75
8	TOILET 3	6' 0" X 9' 0"	
9	BEDROOM 4	12' 9" X 12' 3"	203.44
10	TOILET 4	5' 3" X 9' 0"	
11	DINNING & LIVING	33' 0" X 17' 6"	653
12	COMMON TOILET	6' 0" X 6' 6"	
13	STORE	6' 0" X 6' 1"	
14	KITCHEN	8' 3" X 12' 3"	125.81
15	DRY YARD	8' 3" X 3' 0"	
16	SERVANT ROOM	6' 0" X 6' 0"	53.5
17	SERVANT TOILET	3' 6" X 5' 0"	
18	PASSAGE	28' 3" X 5' 0"	141.25

Note: The plans shown are only indicative and subject to variations and modifications by the developer and for technical reasons without any notice



Tower 1 (Even)
Unit C2 | 4BHK+SERV

UNIT C2
EVEN FLOORS - 4TH, 6TH, 8TH, 10TH, 12TH, 14TH, 16TH, 18TH,
20TH, 22ND

CARPET AREA - 2070 sq. ft.

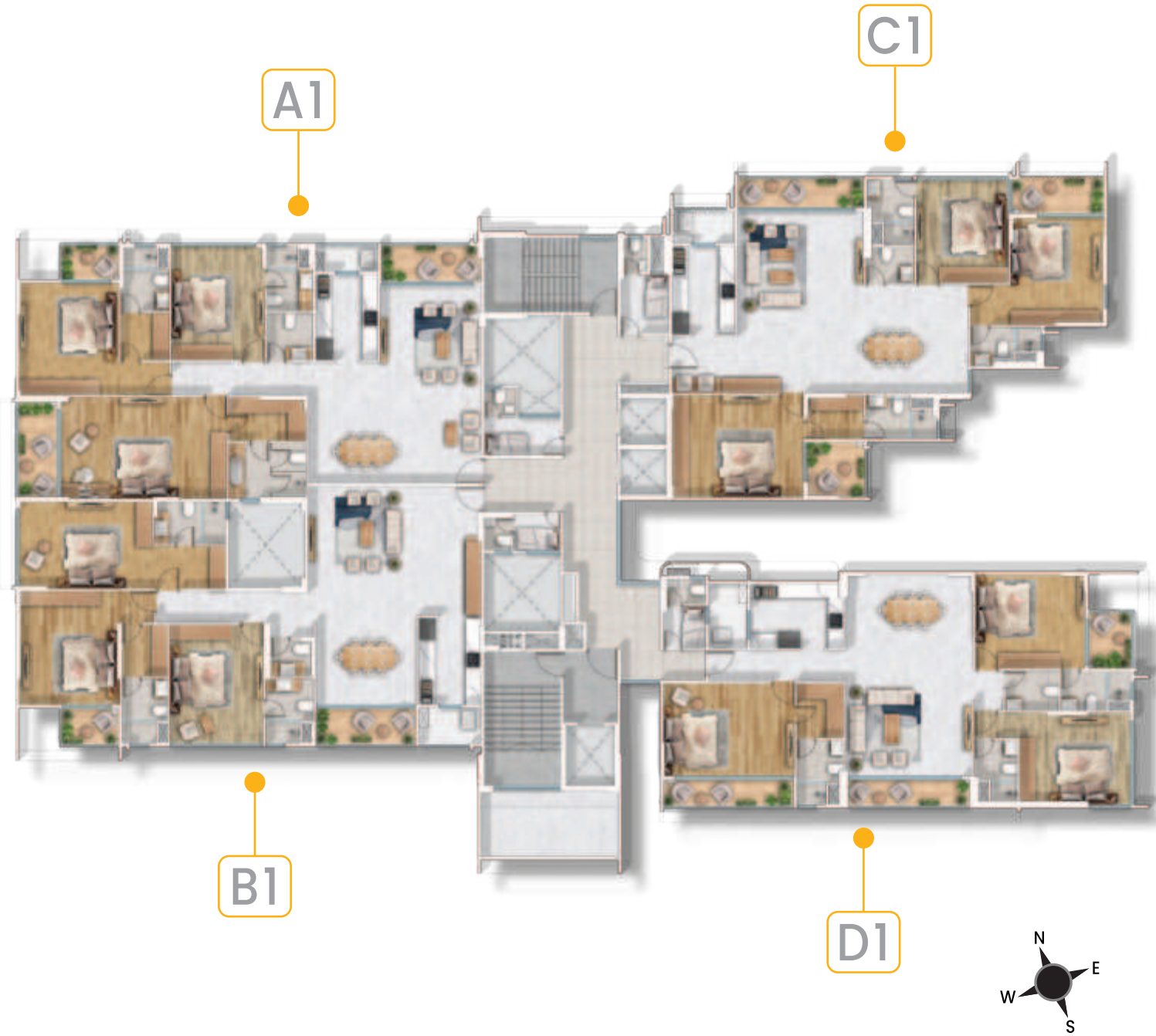
BUILT-UP AREA
WITH BALCONY - 2569 sq. ft.

SALEABLE AREA - 3037 sq. ft.

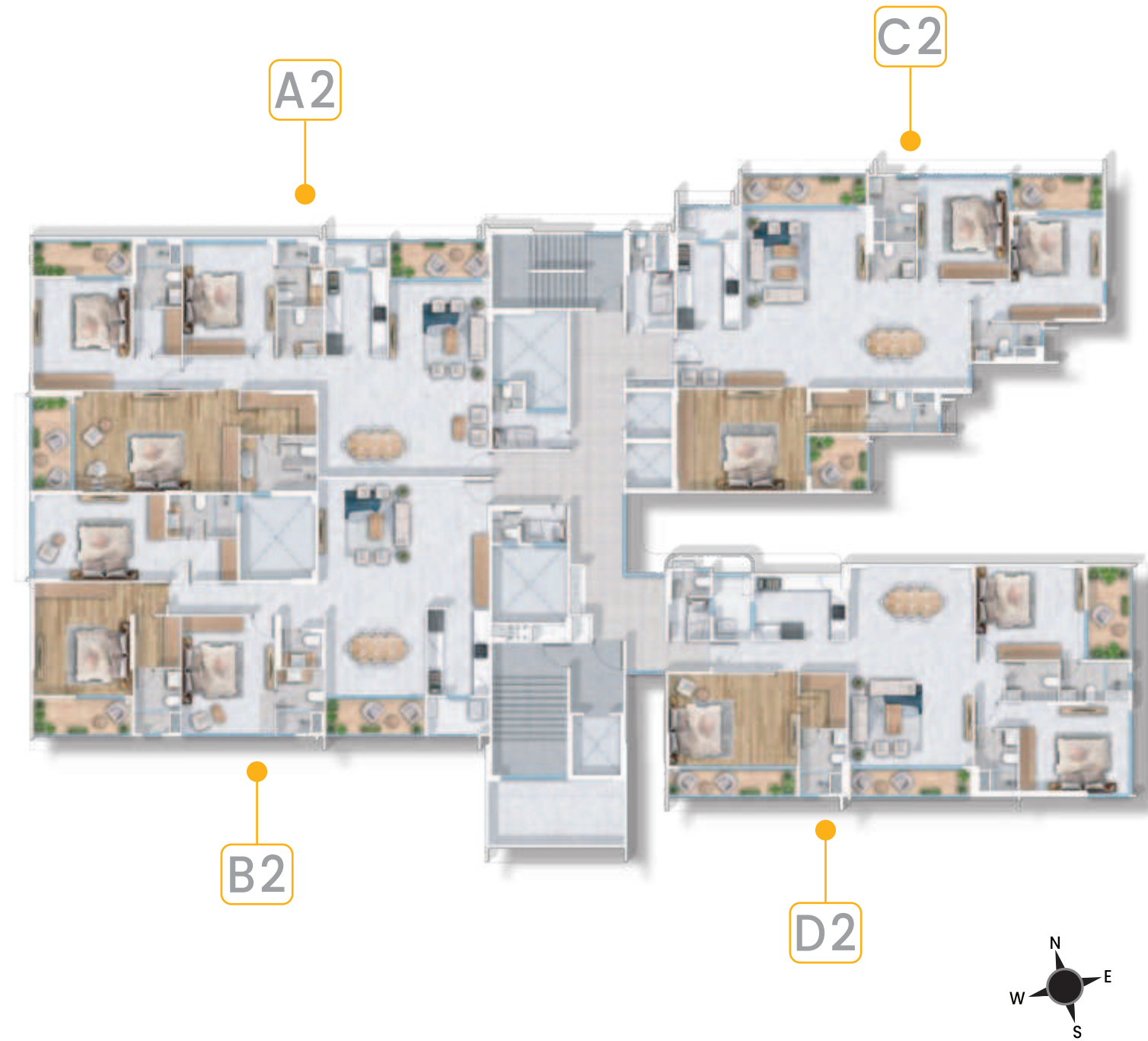
No.	Space Type	Dimensions (Ft.Inch)	Area (Sq. Ft.)
1	MASTER BEDROOM	15' 0" X 15' 9"	321.75
2	DRESSER	6' 0" X 5' 9"	
3	TOILET	6' 0" X 8' 6"	
4	BEDROOM 2	13' 3" X 15' 9"	301.69
5	DRESSER 2	6' 0" X 6' 6"	
6	TOILET 2	6' 0" X 9' 0"	
7	BEDROOM 3	13' 0" X 15' 9"	258.75
8	TOILET 3	6' 0" X 9' 0"	
9	BEDROOM 4	12' 9" X 12' 3"	203.44
10	TOILET 4	5' 3" X 9' 0"	
11	DINNING & LIVING	33' 0" X 17' 6"	653
12	COMMON TOILET	6' 0" X 6' 6"	
13	STORE	6' 0" X 6' 1"	
14	KITCHEN	8' 3" X 12' 3"	125.81
15	DRY YARD	8' 3" X 3' 0"	
16	SERVANT ROOM	6' 0" X 6' 0"	53.5
17	SERVANT TOILET	3' 6" X 5' 0"	
18	PASSAGE	28' 3" X 5' 0"	141.25

Note: The plans shown are only indicative and subject to variations and modifications by the developer and for technical reasons without any notice





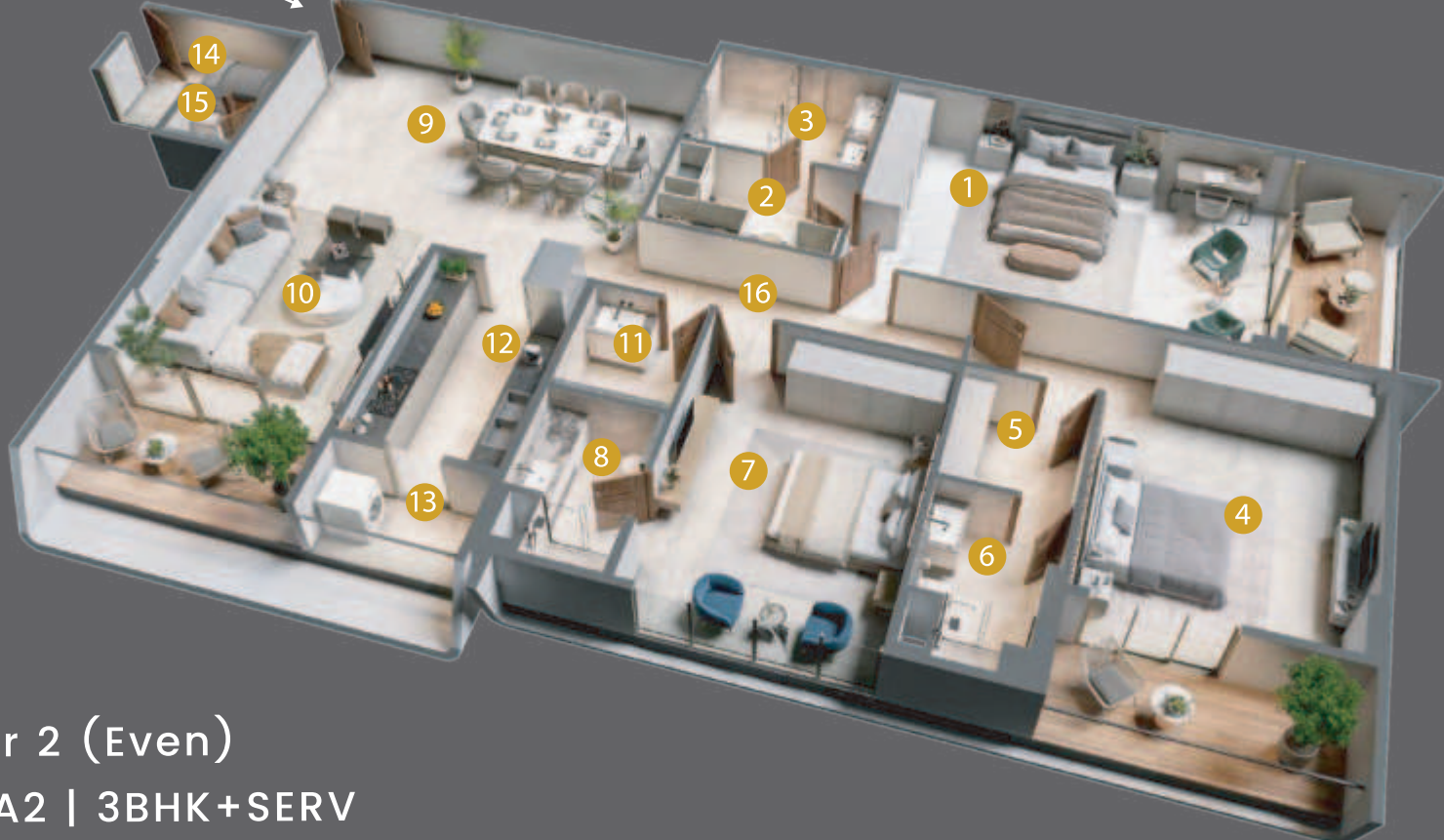
TOWER 2 – ODD FLOORS 3RD, 5TH, 7TH, 9TH, 11TH, 13TH, 15TH, 17TH, 19TH, 21ST FLOOR



TOWER 2 – EVEN FLOORS 4TH, 6TH, 8TH, 10TH, 12TH, 14TH, 16TH , 18TH, 20TH, 22ND FLOOR



Tower 2 (Odd)
Unit A1 | 3BHK+SERV



Tower 2 (Even)
Unit A2 | 3BHK+SERV

UNIT A1
ODD FLOORS - 3RD, 5TH, 7TH, 9TH, 11TH, 13TH, 15TH, 17TH,
19TH, 21ST

CARPET AREA - 1876 sq. ft.

BUILT-UP AREA
WITH BALCONY - 2285 sq. ft.

SALEABLE AREA - 2709 sq. ft.

No.	Space Type	Dimensions (Ft.Inch)	Area (Sq. Ft.)
1	MASTER BEDROOM	21' 8" X 14' 1"	442.64
2	DRESSER	10' 0" X 6' 0"	
3	TOILET	10' 0" X 7' 9"	
4	BEDROOM 2	13' 0" X 15' 9"	301.62
5	DRESSER 2	6' 3" X 6' 6"	
6	TOILET 2	6' 3" X 9' 0"	
7	BEDROOM 3	12' 2" X 16' 0"	248.65
8	TOILET 3	6' 0" X 9' 0"	
9	DINNING	9' 3" X 17' 0"	557
10	LIVING	13' 0" X 27' 9"	
11	COMMON TOILET	6' 0" X 6' 6"	
12	KITCHEN	8' 0" X 12' 0"	124
13	DRY YARD	8' 0" X 3' 6"	
14	SERVANT ROOM	9' 9" X 5' 3"	65.19
15	SERVANT TOILET	4' 0" X 3' 6"	
16	PASSAGE	18' 5" X 4' 7"	84.41

Note: The plans shown are only indicative and subject to variations and modifications by the developer and for technical reasons without any notice

UNIT A2
EVEN FLOORS - 4TH, 6TH, 8TH, 10TH, 12TH, 14TH, 16TH,
18TH, 20TH, 22ND

CARPET AREA - 1876 sq. ft.

BUILT-UP AREA
WITH BALCONY - 2312 sq. ft.

SALEABLE AREA - 2736 sq. ft.

No.	Space Type	Dimensions (Ft.Inch)	Area (Sq. Ft.)
1	MASTER BEDROOM	21' 8" X 14' 1"	442.64
2	DRESSER	10' 0" X 6' 0"	
3	TOILET	10' 0" X 7' 9"	
4	BEDROOM 2	13' 0" X 15' 9"	301.62
5	DRESSER 2	6' 3" X 6' 6"	
6	TOILET 2	6' 3" X 9' 0"	
7	BEDROOM 3	12' 2" X 16' 0"	248.65
8	TOILET 3	6' 0" X 9' 0"	
9	DINNING	9' 3" X 17' 0"	557
10	LIVING	13' 0" X 27' 9"	
11	COMMON TOILET	6' 0" X 6' 6"	
12	KITCHEN	8' 0" X 12' 0"	124
13	DRY YARD	8' 0" X 3' 6"	
14	SERVANT ROOM	9' 9" X 5' 3"	65.19
15	SERVANT TOILET	4' 0" X 3' 6"	
16	PASSAGE	18' 5" X 4' 7"	84.41

Note: The plans shown are only indicative and subject to variations and modifications by the developer and for technical reasons without any notice



Tower 2 (Odd)
Unit B1 | 3BHK+SERV

UNIT B1
ODD FLOORS - 3RD, 5TH, 7TH, 9TH, 11TH, 13TH, 15TH, 17TH, 19TH, 21ST

CARPET AREA - 1786 sq. ft.

BUILT-UP AREA
WITH BALCONY - 2127 sq. ft.

SALEABLE AREA - 2531 sq. ft.

No.	Space Type	Dimensions (Ft.Inch)	Area (Sq. Ft.)
1	MASTER BEDROOM	13' 0" X 16' 0"	305.5
2	DRESSER	6' 0" X 7' 3"	
3	TOILET	6' 0" X 9' 0"	
4	BEDROOM 2	17' 6" X 12' 3"	326.88
5	DRESSER 2	9' 6" X 6' 0"	
6	TOILET 2	9' 3" X 6' 0"	
7	BEDROOM 3	12' 3" X 16' 6"	258.37
8	TOILET 3	6' 3" X 9' 0"	
9	LIVING	8' 3" X 18' 0"	571.25
10	DINNING	13' 0" X 30' 6"	
11	COMMON TOILET	5' 0" X 5' 3"	
12	KITCHEN	8' 0" X 12' 3"	138
13	DRY YARD	8' 0" X 5' 0"	
14	SERVANT ROOM	6' 0" X 5' 0"	44.6
15	SERVANT TOILET	3' 3" X 4' 6"	
16	PASSAGE	14' 11" X 4' 6"	67.12

Note: The plans shown are only indicative and subject to variations and modifications by the developer and for technical reasons without any notice



Tower 2 (Even)
Unit B2 | 3BHK+SERV

UNIT B2
EVEN FLOORS - 4TH, 6TH, 8TH, 10TH, 12TH, 14TH, 16TH, 18TH, 20TH, 22ND

CARPET AREA - 1786 sq. ft.

BUILT-UP AREA
WITH BALCONY - 2155 sq. ft.

SALEABLE AREA - 2559 sq. ft.

No.	Space Type	Dimensions (Ft.Inch)	Area (Sq. Ft.)
1	MASTER BEDROOM	13' 0" X 16' 0"	305.5
2	DRESSER	6' 0" X 7' 3"	
3	TOILET	6' 0" X 9' 0"	
4	BEDROOM 2	17' 6" X 12' 3"	326.88
5	DRESSER 2	9' 6" X 6' 0"	
6	TOILET 2	9' 3" X 6' 0"	
7	BEDROOM 3	12' 3" X 16' 6"	258.37
8	TOILET 3	6' 3" X 9' 0"	
9	LIVING	8' 3" X 18' 0"	571.25
10	DINNING	13' 0" X 30' 6"	
11	COMMON TOILET	5' 0" X 5' 3"	
12	KITCHEN	8' 0" X 12' 3"	138
13	DRY YARD	8' 0" X 5' 0"	
14	SERVANT ROOM	6' 0" X 5' 0"	44.6
15	SERVANT TOILET	3' 3" X 4' 6"	
16	PASSAGE	14' 11" X 4' 6"	67.12

Note: The plans shown are only indicative and subject to variations and modifications by the developer and for technical reasons without any notice



Tower 2 (Odd & Even)
Unit C1 & C2 | 3BHK+SERV



UNIT C1 & C2
FLOORS - 3RD TO 22ND

CARPET AREA - 1750 sq. ft.

BUILT-UP AREA
WITH BALCONY - 2155 sq. ft.

SALEABLE AREA - 2551 sq. ft.

No.	Space Type	Dimensions (Ft.Inch)	Area (Sq. Ft.)
1	MASTER BEDROOM	17' 0" X 14' 3"	342.75
2	DRESSER	7' 7" X 6' 0"	
3	TOILET	9' 2" X 6' 0"	
4	BEDROOM 2	12' 0" X 14' 6"	229.5
5	TOILET 2	6' 0" X 9' 3"	
6	BEDROOM 3	12' 3" X 15' 0"	263.51
		5' 3" X 5' 6"	
7	TOILET 3	9' 3" X 5' 6"	654.5
8	DINNING	13' 6" X 15' 0"	
9	LIVING	16' 6" X 25' 6"	
10	COMMON TOILET	6' 3" X 5' 0"	
11	KITCHEN	8' 3" X 12' 3"	135.944
12	DRY YARD	7' 9" X 4' 6"	
13	SERVANT ROOM	6' 3" X 8' 3"	63.94
14	SERVANT TOILET	2' 9" X 4' 6"	
15	PASSAGE	8' 6" X 7' 9"	65.88



Tower 2 (Odd)
Unit D1 | 3BHK+SERV



UNIT D1
ODD FLOORS - 3RD, 5TH, 7TH, 9TH, 11TH, 13TH, 15TH, 17TH, 19TH, 21ST

CARPET AREA - 1589 sq. ft.

BUILT-UP AREA
WITH BALCONY - 1988 sq. ft.

SALEABLE AREA - 2348 sq. ft.

No.	Space Type	Dimensions (Ft.Inch)	Area (Sq. Ft.)
1	MASTER BEDROOM	17' 0" X 13' 0"	321.5
2	DRESSER	6' 0" X 7' 9"	
3	TOILET	6' 0" X 9' 0"	
4	BEDROOM 2	14' 6" X 13' 0"	235.25
5	TOILET 2	5' 6" X 8' 6"	
6	BEDROOM 3	14' 3" X 13' 0"	234.75
7	TOILET 3	9' 0" X 5' 6"	
8	DINNING & LIVING	16' 6" X 28' 3"	504.62
9	COMMON TOILET	7' 0" X 5' 6"	
10	KITCHEN	12' 3" X 9' 0"	155.25
11	DRY YARD	5' 0" X 9' 0"	
12	SERVANT ROOM	5' 6" X 6' 0"	50.5
13	SERVANT TOILET	5' 0" X 3' 6"	
14	PASSAGE	17' 11" X 4' 3"	76.15



Tower 2 (Even)
Unit D2 | 3BHK+SERV

UNIT D2
EVEN FLOORS - 4TH, 6TH, 8TH, 10TH, 12TH, 14TH, 16TH, 18TH,
20TH, 22ND

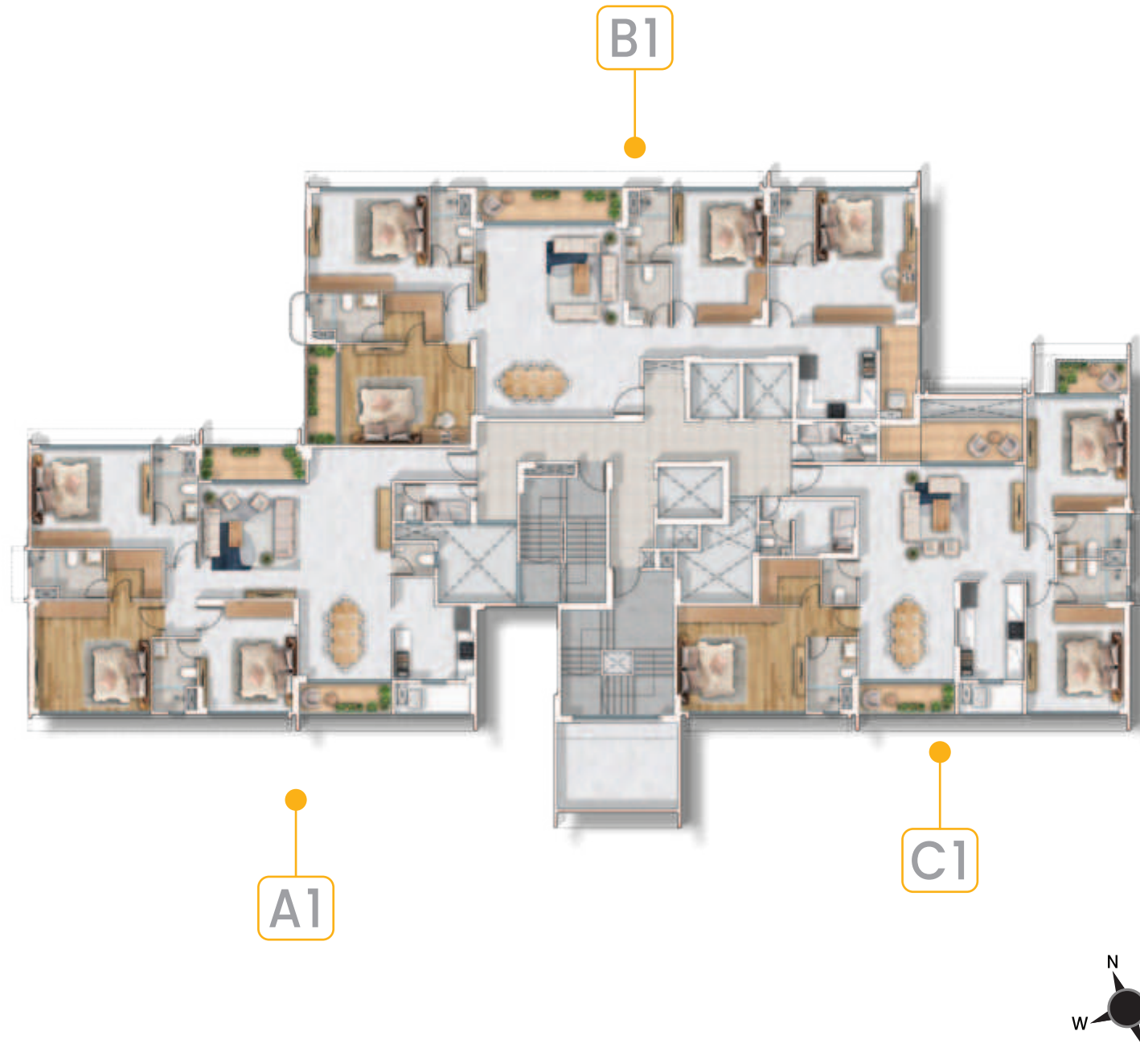
CARPET AREA - 1589 sq. ft.

BUILT-UP AREA
WITH BALCONY - 2020 sq. ft.

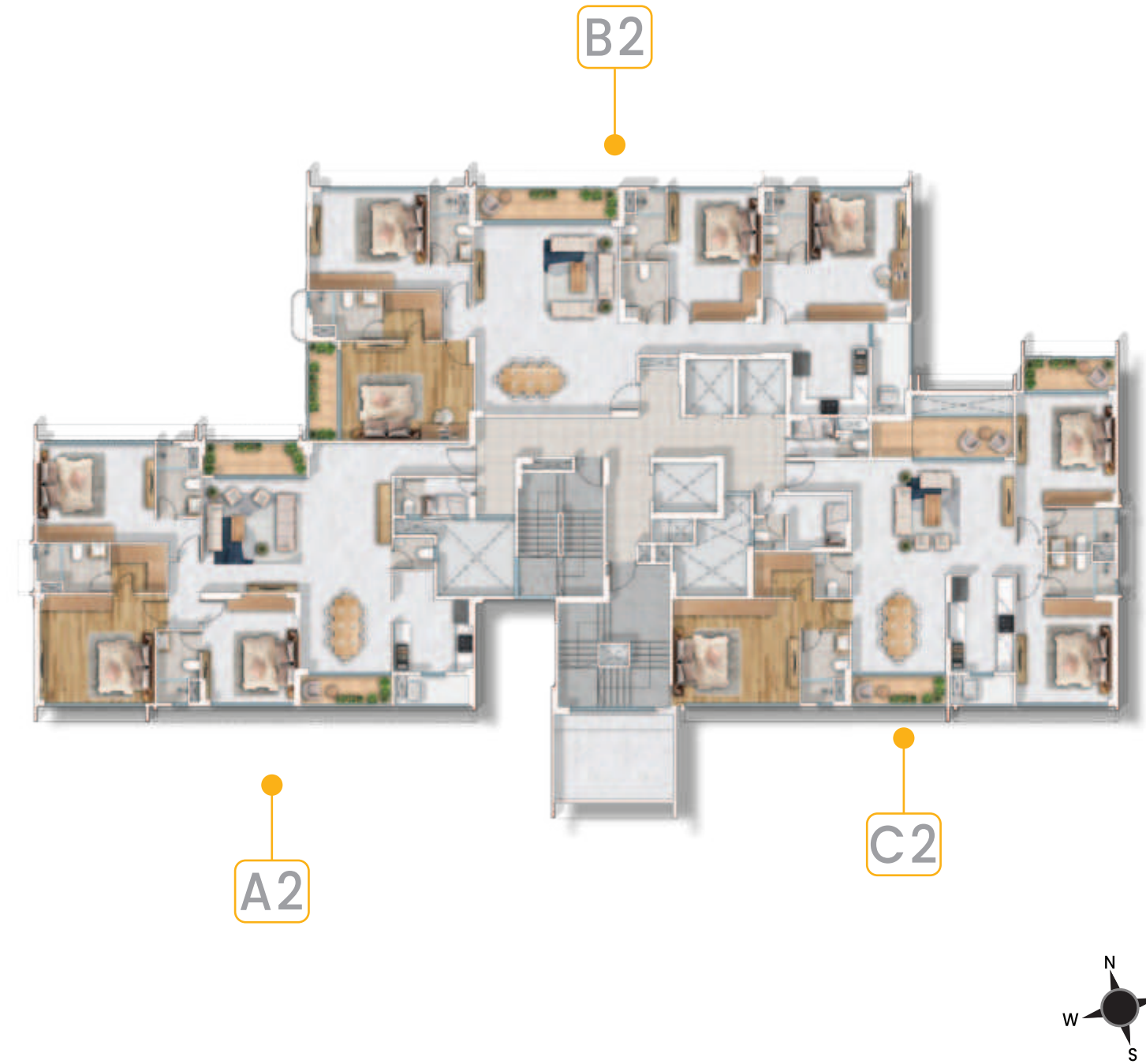
SALEABLE AREA - 2380 sq. ft.

No.	Space Type	Dimensions (Ft.Inch)	Area (Sq. Ft.)
1	MASTER BEDROOM	17' 0" X 13' 0"	321.5
2	DRESSER	6' 0" X 7' 9"	
3	TOILET	6' 0" X 9' 0"	
4	BEDROOM 2	14' 6" X 13' 0"	235.25
5	TOILET 2	5' 6" X 8' 6"	
6	BEDROOM 3	14' 3" X 13' 0"	234.75
7	TOILET 3	9' 0" X 5' 6"	
8	DINNING & LIVING	16' 6" X 28' 3"	504.62
9	COMMON TOILET	7' 0" X 5' 6"	
10	KITCHEN	12' 3" X 9' 0"	155.25
11	DRY YARD	5' 0" X 9' 0"	
12	SERVANT ROOM	5' 6" X 6' 0"	50.5
13	SERVANT TOILET	5' 0" X 3' 6"	
14	PASSAGE	17' 11" X 4' 3"	76.15





TOWER 3 – ODD FLOORS 3RD, 5TH, 7TH, 9TH, 11TH, 13TH, 15TH, 17TH, 19TH, 21ST FLOOR



TOWER 3 – EVEN FLOORS 4TH, 6TH, 8TH, 10TH, 12TH, 14TH, 16TH , 18TH, 20TH, 22ND FLOOR



Tower 3 (Odd & Even)
Unit A1 & A2 | 3BHK+SERV

UNIT A1 & A2
FLOORS - 3RD TO 22ND

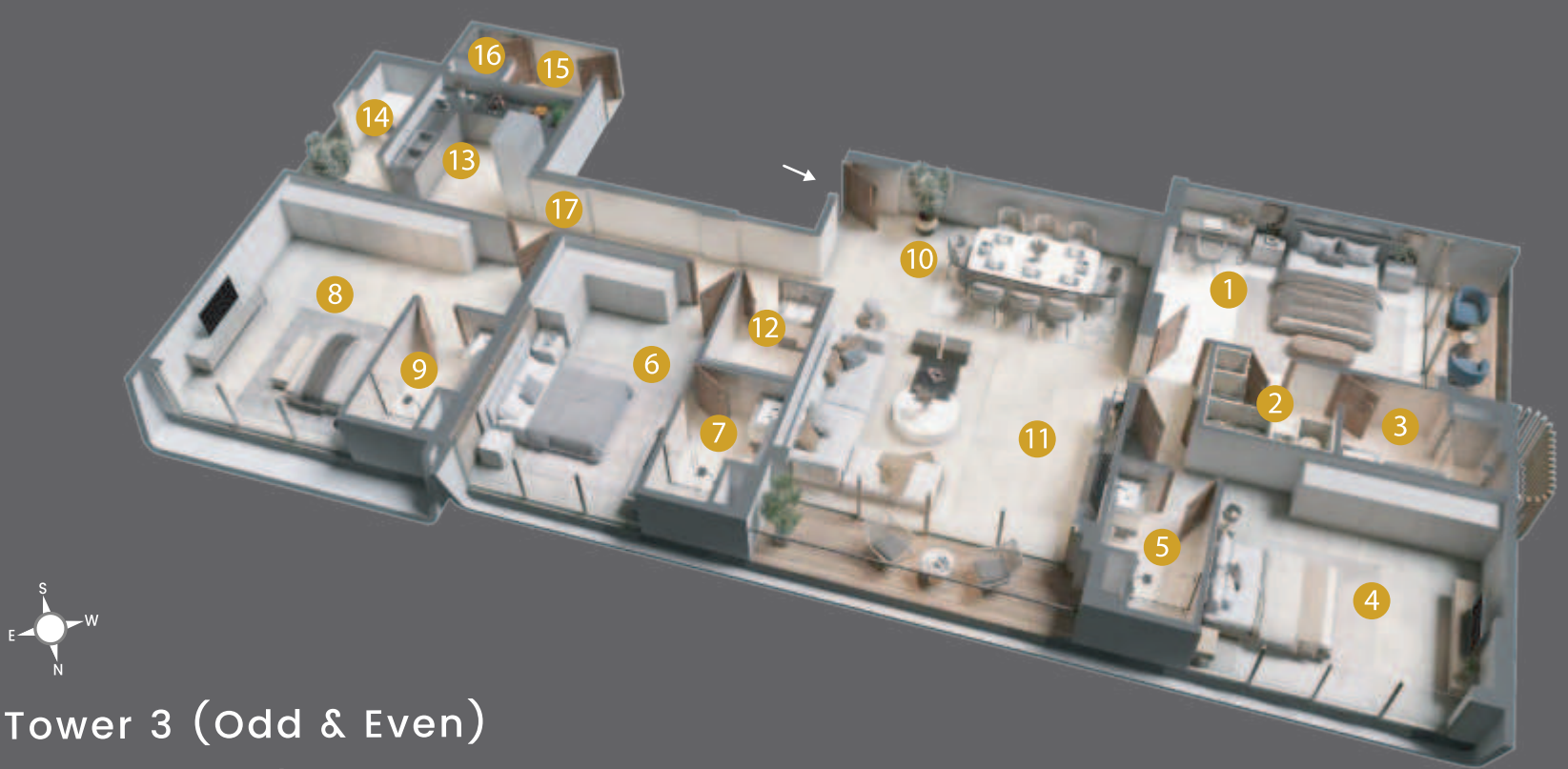
CARPET AREA - 1577 sq. ft.

BUILT-UP AREA
WITH BALCONY - 1886 sq. ft.

SALEABLE AREA - 2243 sq. ft.

No.	Space Type	Dimensions (Ft.Inch)	Area (Sq. Ft.)
1	MASTER BEDROOM	14' 6" X 13' 9"	295.38
2	DRESSER	7' 0" X 6' 0"	
3	TOILET	9' 0" X 6' 0"	
4	BEDROOM 2	12' 3" X 13' 9"	217.94
5	TOILET 2	5' 6" X 9' 0"	
6	BEDROOM 3	15' 0" X 12' 6"	259.14
		4' 1" X 5' 1"	
7	TOILET 3	5' 6" X 9' 3"	
8	DINNING	11' 6" X 10' 3"	584.46
9	LIVING	24' 0" X 14' 6"	
		4' 0" X 8' 8"	
		10' 3" X 4' 6"	
10	COMMON TOILET	5' 0" X 4' 0"	124.88
11	STORE	5' 1" X 3' 6"	
12	KITCHEN	10' 0" X 9' 3"	
13	DRY YARD	9' 3" X 3' 6"	43.13
14	SERVANT ROOM	6' 1" X 4' 6"	
15	SERVANT TOILET	3' 6" X 4' 6"	
16	PASSAGE	9' 7" X 4' 0"	38.33

Note: The plans shown are only indicative and subject to variations and modifications by the developer and for technical reasons without any notice



Tower 3 (Odd & Even)
Unit B1 & B2 | 4BHK+SERV

UNIT B1 & B2
FLOORS - 3RD TO 22ND

CARPET AREA - 1907 sq. ft.

BUILT-UP AREA
WITH BALCONY - 2292 sq. ft.

SALEABLE AREA - 2724 sq. ft.

No.	Space Type	Dimensions (Ft.Inch)	Area (Sq. Ft.)
1	MASTER BEDROOM	17' 0" X 12' 6"	310
2	DRESSER	7' 3" X 6' 0"	
3	TOILET	9' 0" X 6' 0"	
4	BEDROOM 2	15' 0" X 12' 9"	260.88
		3' 9" X 5' 0"	
5	TOILET 2	5' 6" X 9' 3"	250.5
6	BEDROOM 3	12' 0" X 16' 9"	
7	TOILET 3	5' 6" X 9' 0"	
8	BEDROOM 4	12' 6" X 16' 9"	302.38
		6' 0" X 7' 3"	
9	TOILET 4	5' 6" X 9' 0"	522.45
10	DINNING	20' 3" X 11' 6"	
11	LIVING	18' 3" X 12' 9"	
		4' 0" X 4' 3"	
12	COMMON TOILET	5' 6" X 7' 3"	166.754
13	KITCHEN	10' 0" X 11' 6"	
14	DRY YARD	4' 6" X 11' 6"	
15	SERVANT ROOM	6' 0" X 5' 0"	42.75
16	SERVANT TOILET	4' 3" X 3' 0"	
17	PASSAGE	19' 6" X 4' 0"	78

Note: The plans shown are only indicative and subject to variations and modifications by the developer and for technical reasons without any notice



Tower 3 (Odd)
Unit C1 | 3BHK+SERV

UNIT C1
ODD FLOORS - 3RD, 5TH, 7TH, 9TH, 11TH, 13TH, 15TH,
17TH, 19TH, 21ST

CARPET AREA - 1530 sq. ft.

BUILT-UP AREA
WITH BALCONY - 1909 sq. ft.

SALEABLE AREA - 2255 sq. ft.

No.	Space Type	Dimensions (Ft.Inch)	Area (Sq. Ft.)
1	MASTER BEDROOM	16' 0" X 13' 0"	303.25
2	DRESSER	7' 6" X 5' 6"	
3	TOILET	6' 0" X 9' 0"	
4	BEDROOM 2	12' 0" X 13' 0"	202.75
5	TOILET 2	8' 6" X 5' 6"	
6	BEDROOM 3	12' 6" X 14' 3"	224.87
7	TOILET 3	8' 6" X 5' 6"	
8	DINNING	12' 0" X 12' 6"	474.26
9	LIVING	20' 9" X 14' 6"	
10	COMMON TOILET	4' 3" X 5' 6"	
11	KITCHEN	8' 3" X 12' 3"	129.06
12	DRY YARD	8' 0" X 3' 6"	
13	SERVANT ROOM	7' 6" X 7' 0"	68.5
14	SERVANT TOILET	4' 0" X 4' 0"	
15	PASSAGE	8' 0" X 4' 0"	32



Tower 3 (Even)
Unit C2 | 3BHK+SERV

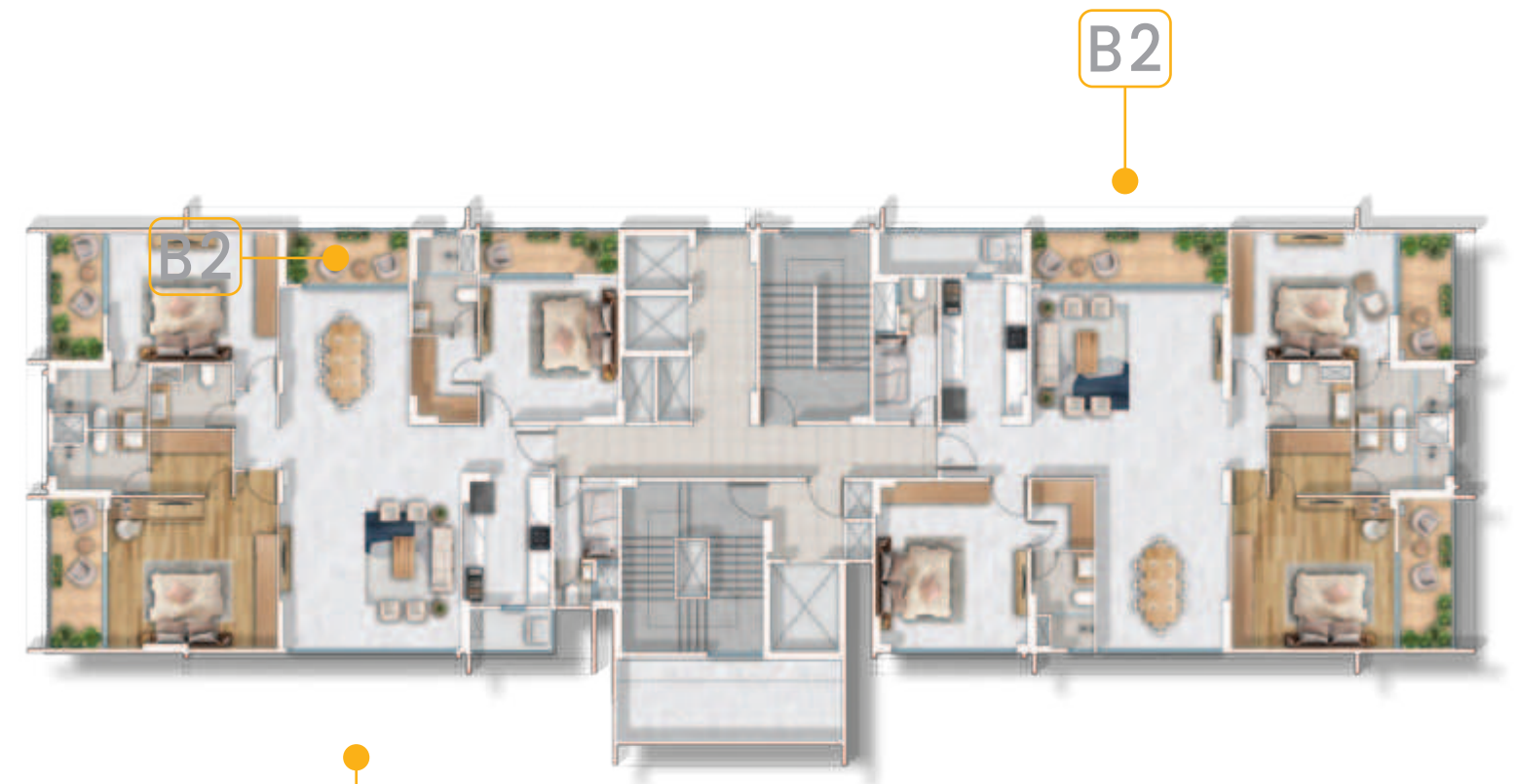
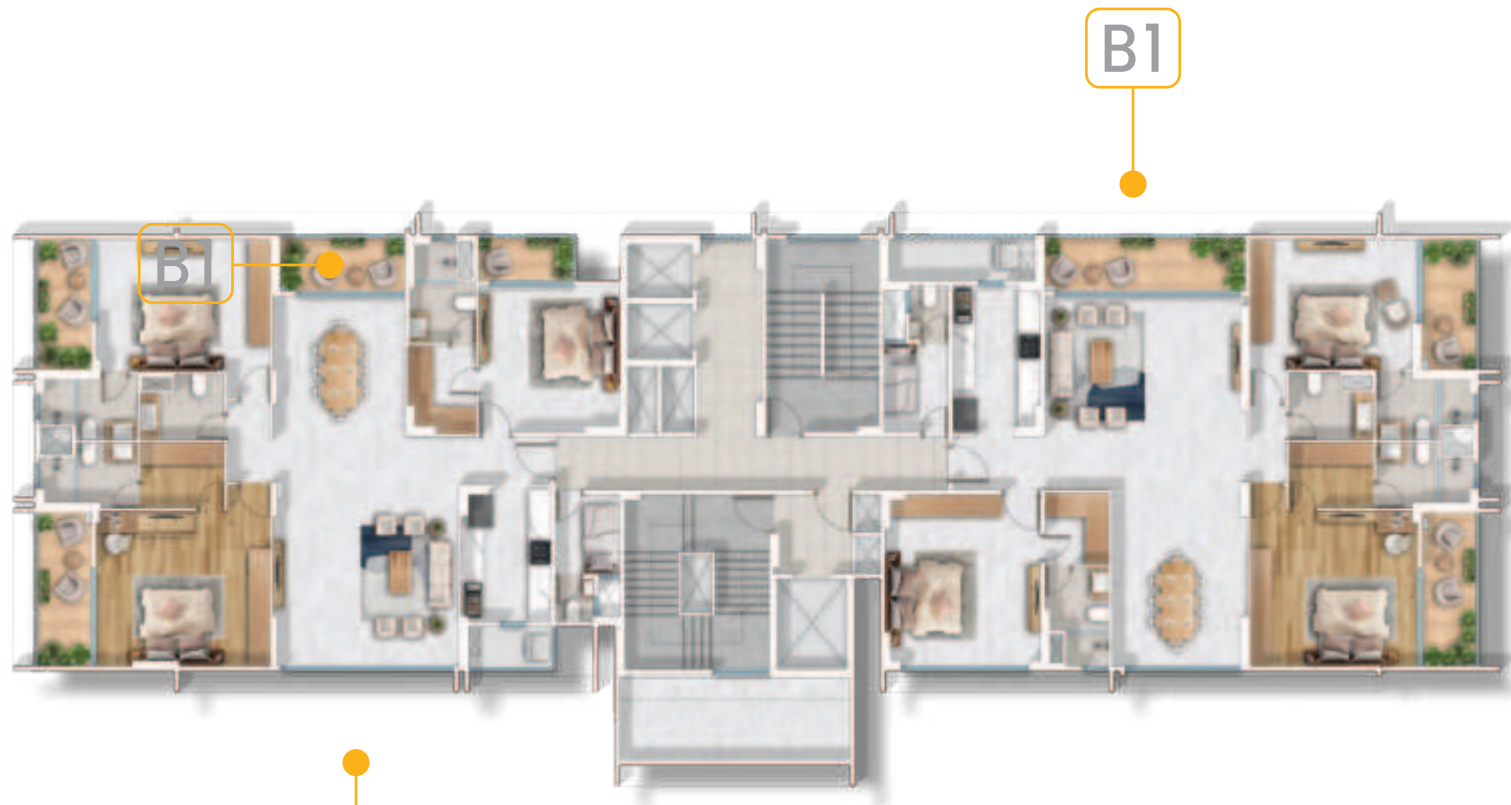
UNIT C2
EVEN FLOORS - 4TH, 6TH, 8TH, 10TH, 12TH, 14TH,
16TH, 18TH, 20TH, 22ND

CARPET AREA - 1530 sq. ft.

BUILT-UP AREA
WITH BALCONY - 1920 sq. ft.

SALEABLE AREA - 2266 sq. ft.

No.	Space Type	Dimensions (Ft.Inch)	Area (Sq. Ft.)
1	MASTER BEDROOM	16' 0" X 13' 0"	303.25
2	DRESSER	7' 6" X 5' 6"	
3	TOILET	6' 0" X 9' 0"	
4	BEDROOM 2	12' 0" X 13' 0"	202.75
5	TOILET 2	8' 6" X 5' 6"	
6	BEDROOM 3	12' 6" X 14' 3"	224.87
7	TOILET 3	8' 6" X 5' 6"	
8	DINNING	12' 0" X 12' 6"	474.26
9	LIVING	20' 9" X 14' 6"	
10	COMMON TOILET	4' 3" X 5' 6"	
11	KITCHEN	8' 3" X 12' 3"	129.06
12	DRY YARD	8' 0" X 3' 6"	
13	SERVANT ROOM	7' 6" X 7' 0"	68.5
14	SERVANT TOILET	4' 0" X 4' 0"	
15	PASSAGE	8' 0" X 4' 0"	32

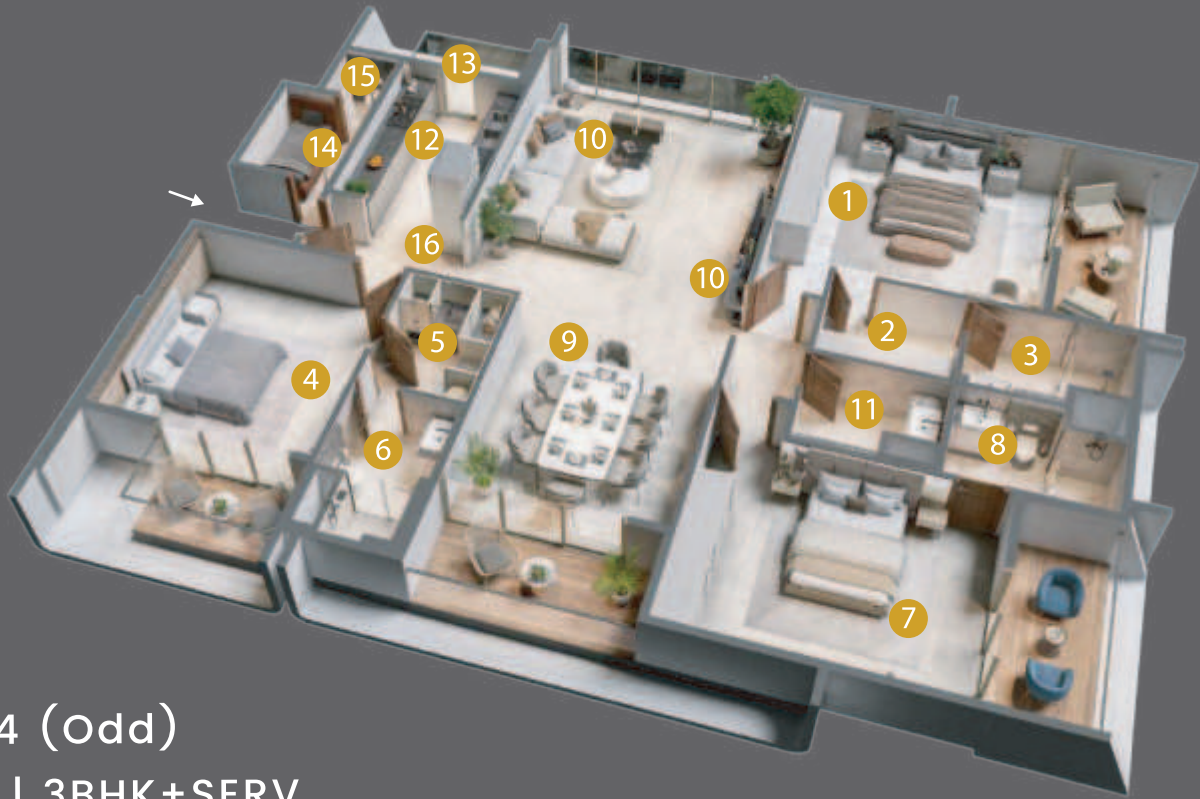


TOWER 4 – ODD FLOORS 3RD, 5TH, 7TH, 9TH, 11TH, 13TH, 15TH, 17TH FLOOR

TOWER 4 – EVEN FLOORS 2ND, 4TH, 6TH, 8TH, 10TH, 12TH, 14TH, 16TH FLOOR



Tower 4 (Odd)
Unit A1 | 3BHK+SERV

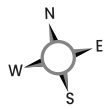


UNIT A1
ODD FLOORS - 3RD, 5TH, 7TH, 9TH, 11TH, 13TH, 15TH, 17TH,

CARPET AREA - 1700 sq. ft.

BUILT-UP AREA
WITH BALCONY - 2176 sq. ft.

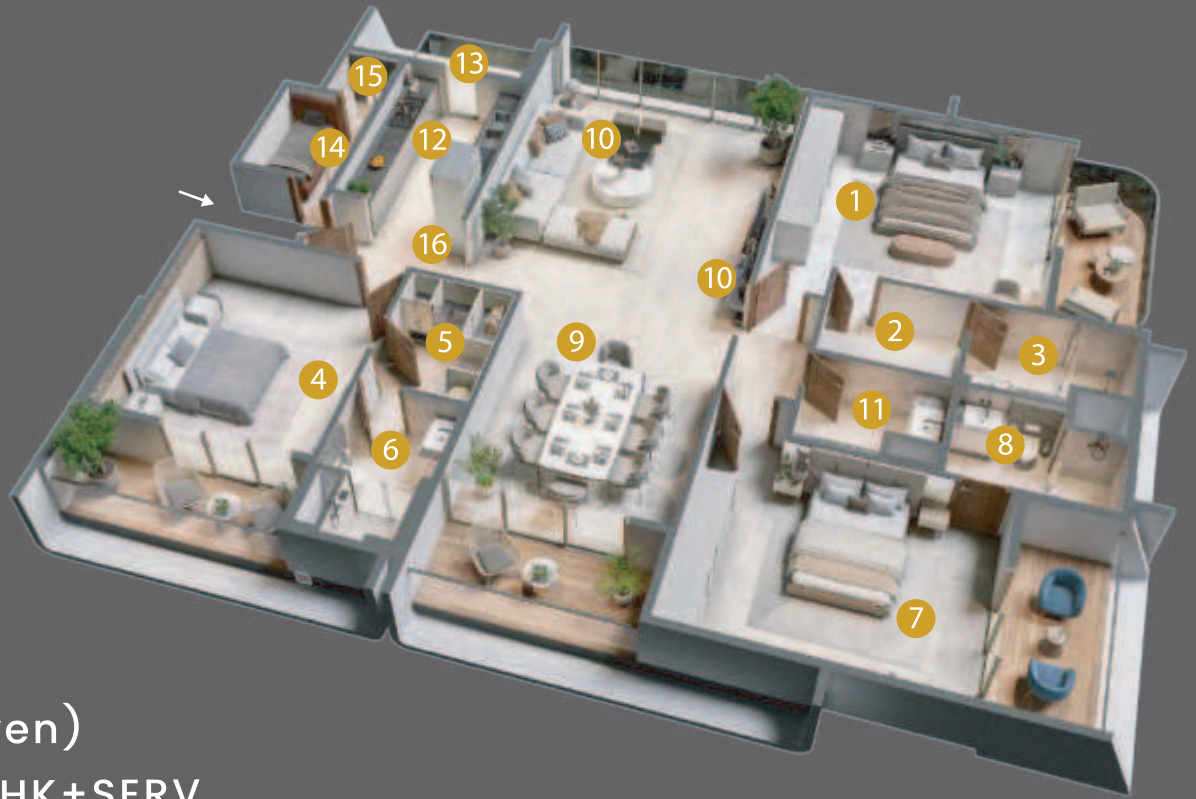
SALEABLE AREA - 2561 sq. ft.



Note: The plans shown are only indicative and subject to variations and modifications by the developer and for technical reasons without any notice



Tower 4 (Even)
Unit A2 | 3BHK+SERV

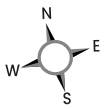


UNIT A2
EVEN FLOORS - 2ND, 4TH, 6TH, 8TH, 10TH, 12TH, 14TH, 16TH,

CARPET AREA - 1700 sq. ft.

BUILT-UP AREA
WITH BALCONY - 2184 sq. ft.

SALEABLE AREA - 2569 sq. ft.



Note: The plans shown are only indicative and subject to variations and modifications by the developer and for technical reasons without any notice

No.	Space Type	Dimensions (Ft.Inch)	Area (Sq. Ft.)
1	MASTER BEDROOM	16' 0" X 14' 3"	328.5
2	DRESSER	7' 9" X 6' 0"	
3	TOILET	9' 0" X 6' 0"	
4	BEDROOM 2	13' 0" X 13' 6"	282.5
5	DRESSER 2	6' 3" X 8' 0"	
6	TOILET 2	6' 0" X 9' 6"	
7	BEDROOM 3	16' 0" X 12' 3"	250
8	TOILET 3	9' 0" X 6' 0"	
9	DINNING	12' 3" X 13' 0"	597
10	LIVING	17' 0" X 21' 3" 4' 0" X 7' 6"	
11	COMMON TOILET	7' 9" X 6' 0"	
12	KITCHEN	8' 3" X 12' 3"	130.12
13	DRY YARD	7' 9" X 3' 9"	
14	SERVANT ROOM	6' 0" X 7' 3"	57.5
15	SERVANT TOILET	3' 6" X 4' 0"	
16	PASSAGE	8' 3" X 4' 6"	37.12

No.	Space Type	Dimensions (Ft.Inch)	Area (Sq. Ft.)
1	MASTER BEDROOM	16' 0" X 14' 3"	328.5
2	DRESSER	7' 9" X 6' 0"	
3	TOILET	9' 0" X 6' 0"	
4	BEDROOM 2	13' 0" X 13' 6"	282.5
5	DRESSER 2	6' 3" X 8' 0"	
6	TOILET 2	6' 0" X 9' 6"	
7	BEDROOM 3	16' 0" X 12' 3"	250
8	TOILET 3	9' 0" X 6' 0"	
9	DINNING	12' 3" X 13' 0"	597
10	LIVING	17' 0" X 21' 3" 4' 0" X 7' 6"	
11	COMMON TOILET	7' 9" X 6' 0"	
12	KITCHEN	8' 3" X 12' 3"	130.12
13	DRY YARD	7' 9" X 3' 9"	
14	SERVANT ROOM	6' 0" X 7' 3"	57.5
15	SERVANT TOILET	3' 6" X 4' 0"	
16	PASSAGE	8' 3" X 4' 6"	37.12



Tower 4 (Odd & Even)
Unit B1 & B2 | 3BHK+SERV



UNIT B1 & B2
FLOORS - 2ND TO 17TH

CARPET AREA - 1752 sq. ft.

BUILT-UP AREA
WITH BALCONY - 2204 sq. ft.

SALEABLE AREA - 2601 sq. ft.



No.	Space Type	Dimensions (Ft.Inch)	Area (Sq. Ft.)
1	MASTER BEDROOM	14' 3" X 15' 9"	317.44
2	DRESSER	6' 0" X 6' 6"	
3	TOILET	6' 0" X 9' 0"	
4	BEDROOM 2	15' 6" X 14' 3"	321.38
5	DRESSER 2	7' 9" X 6' 0"	
6	TOILET 2	9' 0" X 6' 0"	
7	BEDROOM 3	15' 6" X 12' 0"	242.25
8	TOILET 3	9' 0" X 6' 3"	
9	DINNING	12' 6" X 16' 3"	589.06
10	LIVING	18' 9" X 18' 0"	
11	COMMON TOILET	7' 9" X 6' 3"	
12	KITCHEN	8' 3" X 13' 6"	165.385
13	DRY YARD	13' 6" X 4' 0"	
14	SERVANT ROOM	6' 0" X 8' 0"	65.5
15	SERVANT TOILET	3' 6" X 5' 0"	
16	PASSAGE	8' 3" X 5' 0"	41.25

Note: The plans shown are only indicative and subject to variations and modifications by the developer and for technical reasons without any notice



There are homes, nice, pretty homes.

And then there is Aamod – a bespoke residential address that underlines your elevated sense of aesthetics and sophistication. With thoughtfully designed common and individual spaces, this future proof gated community is nothing like anything. Come explore a lifestyle meant for an exceptional few.

PROPOSED SPECIFICATIONS



STRUCTURE

An earthquake resistant RCC structure with Mivaan shuttering.

EXTERNAL AND INTERNAL WALLS: – fly ash bricks, ACC blocks/ reinforced concrete.



RECEPTION LOBBY

Doubled height air-conditioned lobby

FLOORING: mirror-polished Italian marble

CEILING: decorative false ceiling



KITCHEN

COUNTER: Quartz with 2 feet height tiles DADO & SS sink

FLOORING: Double charged vitrified tiles

ELECTRICALS: Modular switches and sockets



BALCONY

GLASS RAILING: Aluminium glass railing

FLOORING: Anti skid tiles

CEILING: Painted with lights point at ceiling



LIFT LOBBY

FLOORING: Double charged vitrified tiles

Lift facade with italian marble



AIR CONDITIONING

VRV air conditioning (ODUs)



TOILET

FLOORING: Anti skid tiles

WALL FINISH: Tiles upto false ceiling level

SANITARY CHINA WARE: Kohler or equivalent

CP FITTING: Kohler or equivalent



ELEVATOR

13 passengers high-speed elevator with golden finish.



SERVANT ROOM + TOILET

FLOORING: Vitrified tiles

WALL FINISH: Putty

CEILING: Ready to paint

DOORS & FRAMES: Hardwood flush door



BEDROOM, LIVING & DINING ROOM

FLOORING: Master Bedroom– Marble flooring Living, Dining & Other Bedroom – Double charged vitrified tiles

WALL FINISH: Putty/ Level plast

CEILING: Putty/ Level plast

WINDOWS: Aluminium powder coated windows with glass panes
DOORS & FRAMES: Hardwood frames with laminated flush door

ELECTRICALS: Distribution board of Schneider/Legrand / Equivalent make modular switches and sockets of Schneider/ Legrand / Equivalent concealed copper wiring in all points

**VIDEO DOOR PHONE ON MAIN DOOR | SMART HOME APP | ANTI- TERMITE TREATMENT
WATERPROOFING ON TERRACE OF TOWERS**



BEYOND THE THRESHOLD
A LIFE OF SOPHISTICATION AWAITS.